

# ELMDOR ACCESS DOORS

SETTING *THE STANDARD* FOR THE INDUSTRY

AVAILABILITY • COMMITMENT • QUALITY • SERVICE



## ELMDOR/STONEMAN MANUFACTURING CO.

was founded on the principle of design and production of the finest quality sheet metal fabrication.

Five decades of experience and innovative engineering have enabled us to become a well established high volume, low cost producer of access doors.

With a nationwide distribution network, plus strategically located warehouses, we are dedicated to effectively satisfying our customers' requirements. Our product line includes the widest variety of standard access doors of any manufacturer.

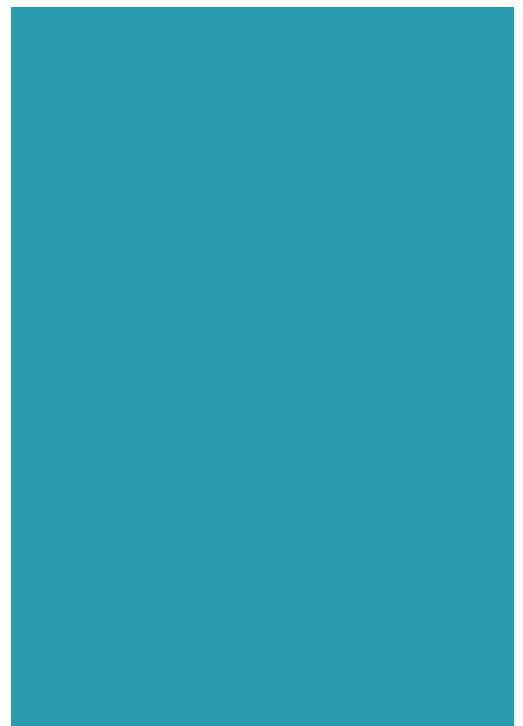
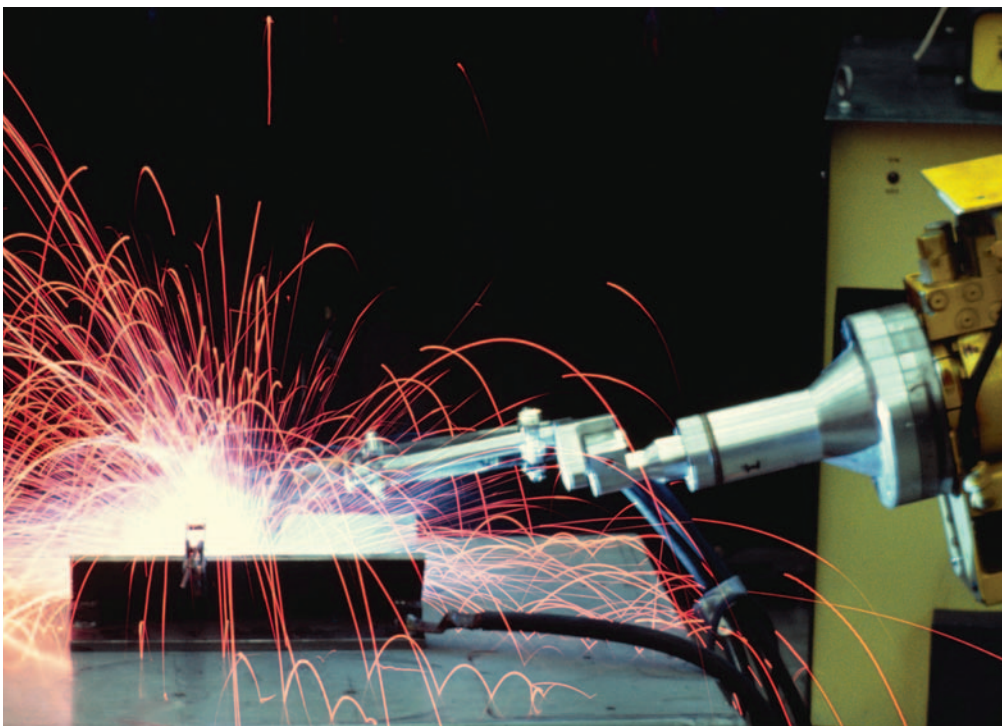
Elmdor's continued dedication to cost effective quality, development of new products for the building industry, and customer service, firmly establishes Elmdor as the leader in its field.

Elmdor is a division of Acorn Engineering Company.

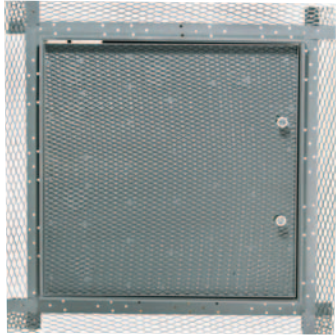




**ELMDOR**<sup>®</sup>  
ACCESS DOORS



# AP SERIES



## ACOUSTICAL PLASTER ACCESS DOORS

**Doors** are designed to install flush with the plaster surface assuring an attractive finish. Doors are recessed 5/8" and lined with a metal lath to allow plaster of surrounding surfaces to fill in the face of the door.

**Door and Frame** are fabricated from 16 gage, galvanized steel with a prime coat finish.

**Frame** has a 3" wide metal lath on all four sides to key into the plaster.

**Concealed Hinge** is recessed and operates completely out of sight so that only the metal thickness of the door and frame is visible.

**Latch** is screwdriver operated.

**Finish** is a prime coat suitable for painting.

### Optional Latches:

- CL- Cylinder Lock
- AKL- Allen Key Latch

# AT SERIES



## ACOUSTICAL TILE ACCESS DOORS

**Doors** are designed for use with acoustical tile or gypsum board walls and ceilings. The door is engineered to install flush, virtually concealed. Door is recessed 5/8" to accept acoustical tile or gypsum board.

**Door** is 16 gage and frame is 12 gage, galvanized steel with a prime coat finish.

**Concealed Hinge** operates completely out of sight so that only the metal thickness of the door and frame is visible.

**Latch** is screwdriver operated.

### Optional Latches:

- CL- Cylinder Lock
- AKL- Allen Key Latch

# CFR SERIES



## CEILING FIRE RESISTANT ACCESS DOORS

**Doors** are designed for use in a suspended dry wall ceiling as part of a fire rated ceiling assembly. The CFR Series door, itself, is not fire rated. However, the combination of steel and fire rated tile maintains the fire resistant quality of the ceiling assembly. Door is recessed 1-1/2" to accommodate dual layered ceiling tile.

**Door** is fabricated from 16 gage, galvanized steel with a prime coat finish.

**Frame** is fabricated from 18 gage, galvanized steel with a prime coat finish.

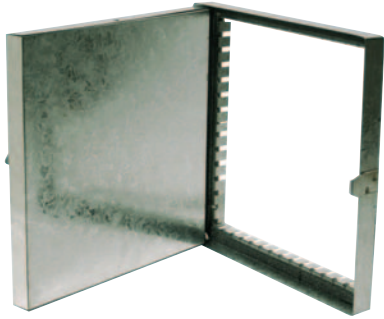
**Hinge** is a continuous piano type.

**Latch** is screwdriver operated.

### Optional Latches:

- CL- Cylinder Lock
- AKL- Allen Key Latch

# DT SERIES



## DUCT ACCESS DOORS

**Doors** are designed to provide access to equipment installed within ducts. The door panels are insulated and gaskets between the panel and frame will assure tight seals without obstruction in the air system.

**Door and Frame** are fabricated from 24 gage, galvanized steel.

**Door** is 1" thick, double wall construction and insulated.

**Frame** is provided with knock-over tabs and easily attached to the duct.

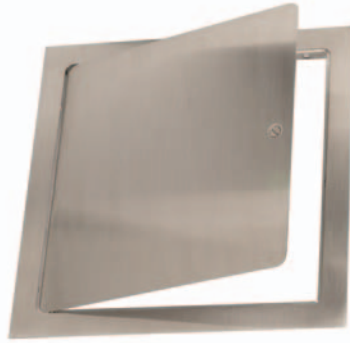
**Hinge** is continuous piano type.

**Cam Latch** is self-tightening and hand operated.

### Optional Latches:

- CNH- Cam Latch-No Hinge

# DW SERIES



## DRYWALL ACCESS DOORS

**Doors** are ideally suited for new installations or for remodeling, in masonry, tile, wood or other wall and ceiling surfaces. Door features rounded safety corners.

**Door and Frame** are fabricated from 16 gage, galvanized steel with a prime coat finish.

**Frame** is one piece construction, 1" wide and provides perfect concealment of the rough wall opening. Wall frame is provided with 1/4" mounting holes for fastening within the furred spaces allowing faster installation and fixing maximum clearance.

**Concealed Pivoting Rod Hinge** prevents distortion and closes door squarely. Doors 24" or larger are provided with a continuous piano hinge.

**Latch** is screwdriver operated.

**Finish** is a prime coat suitable for painting.

### Optional Latches:

- CL- Cylinder Lock
- AKL- Allen Key Latch
- TH- T Handle

### Optional Finish:

- SS- Stainless Steel

# DWB SERIES



## DRYWALL BEAD ACCESS DOORS

**Doors** are designed for flush installation in dry wall surfaces. Door features a concealed hinge that prevents distortion and closes door squarely.

**Door and Frame** are fabricated from 16 gage, galvanized steel with a prime coat finish.

**Frame** has 1/4" mounting holes positioned to allow anchoring directly to studs to assure a secure mounting. A drywall bead on the frame allows the drywall joint compound to be applied over the bead at the same time as the joints and corners.

**Flange** has prepunched holes to provide grip for the joint compound and facilitate fastening the flange to framing members with drywall screws.

**Concealed Pivoting Rod Hinge** prevents distortion and closes door squarely. Doors 24" or larger are provided with a continuous piano hinge.

**Latch** is screwdriver operated. Finish is a prime coat suitable for painting.

### Optional Latches:

- CL- Cylinder Lock
- AKL- Allen Key Latch
- TH- T Handle

### Optional Finish:

- SS- Stainless Steel



# FR SERIES



## FIRE RATED WALL ACCESS DOORS

**Doors** are Fire Rated by Underwriters Laboratories Inc., for 1-1/2 hours, "B" Label, and meet ANSI-UL 10B standard. Door has a heavy duty spring closer to assure positive latching when panel closes. This door is for wall installation only.

**Door and Frame** are fabricated from 16 gage, galvanized steel with a prime coat finish. Door has a heavy duty spring to assure positive latching.

**Frame** is equipped with both masonry anchors and bolt holes to facilitate installation in all types of wall construction.

**Concealed Hinge** operates completely out of sight so that only the door and frame is visible.

**Exterior Latch** is recessed and is operated using a ring attached to the sliding bolt.

**Interior Latch Release Slide** is included enabling door to be opened from the inside.

**Finish** is a prime coat suitable for painting.

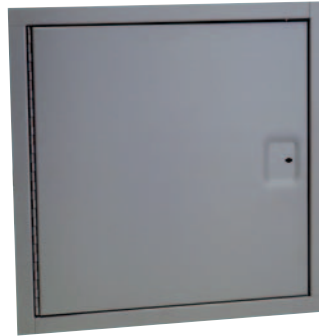
**Optional Latch:**

- CL- Cylinder Lock

**Optional Finish:**

- SS- Stainless Steel

# FRC SERIES



## FIRE RATED CEILING ACCESS DOORS

**Doors** are rated by Underwriters Laboratories for 1.5 hours, "B" label in walls, and by Warnock Hershey for 3 hours in ceilings. Door should be utilized when providing access in fire rated walls and ceilings. Doors have heavy-duty spring closures to ensure positive latching when panel closes.

**Door** is fabricated from 20 gage, galvanized steel with a prime coat finish.

**Door panel** is provided with two inches of insulation in a sandwich type construction.

**Frame** is fabricated from 16 gage, galvanized steel with a prime coat finish and provided with masonry anchors and bolt holes.

**Hinge** is a fully concealed continuous piano type and mounted on the long side of the rectangular door panel.

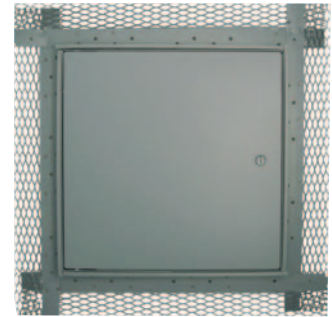
**Exterior Latch** is a dual purpose lock that features a knurled knob and key operation. Both are provided at time of shipping.

**Interior Latch Release Slide** is included enabling door to be opened from the inside.

**Option:**

- MLP- Mortice Lock Prep

# ML SERIES



## METAL LATH ACCESS DOORS

**Doors** are designed specifically to meet the needs of plaster construction. Door has a 3" wide metal lath on all four sides for keying into plaster.

**Door and Frame** are fabricated from 16 gage, galvanized steel.

**Concealed Pivoting Rod Hinge** prevents distortion and closes door squarely. Doors 24" or larger are provided with a continuous piano hinge.

**Latch** is screwdriver operated.

**Finish** is a prime coat suitable for painting.

**Optional Latches:**

- CL- Cylinder Lock
- AKL- Allen Key Latch

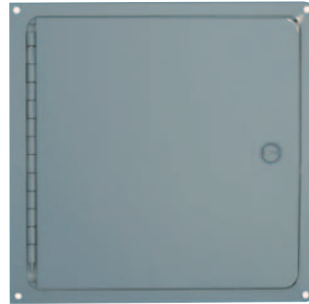
**Optional Finish:**

- SS- Stainless Steel

# PW SERIES

# SF SERIES

# SLA SERIES



## PLASTERED WALL ACCESS DOORS

**Doors** are designed specifically to meet the needs of plaster construction. Door has 3/4" plaster ground for plaster finish.

**Door and Frame** are fabricated from 16 gage, galvanized steel with a prime coat finish.

**Frame** has 1/4" mounting holes to facilitate installation. Concealed Pivoting Rod Hinge prevents distortion and closes door squarely.

**Latch** is screwdriver operated.

**Finish** is prime coat suitable for painting.

### Optional Latches:

- CL- Cylinder Lock
- AKL- Allen Key Latch

### Optional Finish:

- SS- Stainless Steel

## SURF ACCESS DOORS

**Doors** are designed for surface installation on drywall, masonry or thin-coat plaster. Door features rounded safety corners and is attached to the frame with a continuous piano hinge allowing a 175 degree opening.

**Door and Frame** are fabricated from 14 gage, galvanized steel.

**Frame** is easily secured to the studs and anchored through pre-drilled holes in each corner.

**Latch** is screwdriver operated.

**Finish** is a prime coat suitable for painting.

### Optional Latches:

- CL- Cylinder Lock
- AKL- Allen Key Latch
- TH- T Handle

## SLAMMER ACCESS DOORS

**Doors** are designed to provide security access with the strength and durability to withstand abusive and vandal-prone conditions prevalent in many institutions. Without sacrificing security, these doors allow maintenance personnel access to plumbing chases, shut-off valves and electrical apparatus located behind finished walls. Door is fabricated from 10 gage steel and is provided with a high security, vandal resistant, detention type lock. Doors can be manufactured with locks provided by others.

**Frame** is 3/16" x 2" x 2" angle steel, welded and with pre-punched mounting holes.

**Latch** is a detention type dead bolt lock with paracentric key.

**Hinges** are heavy duty and are welded to the door and frame.

**Finish** is a prime coat suitable for painting.

### Option:

- LD- Lock by Others



## SHUR-LOK ACCESS DOORS

**Doors** are designed for drywall, masonry or concrete construction and provide the security required in today's schools, hospitals, hotels, and correctional institutions.

**Door and Frame** are fabricated from 14 gage, galvanized steel and the door is provided with a 16 gage vertical reinforcement channel.

**Lock** is an automatic springbolt type featuring a precision mechanism. When the door is closed in the locked position, the uniquely designed angled cam lock automatically engages. The key can only be removed when the lock is in the locked position.

**Hinge** is a concealed type.

**Concealed Pivoting Rod Hinge** prevents distortion and closes door squarely. Doors 24" or larger are provided with a continuous piano hinge.

**Finish** is a prime coat suitable for painting.

**Optional Finish:**

- SS- Stainless Steel

## FLUSH VALVE PANEL AND FRAME

**Wall Panel and Frame** are designed for back supply toilets and urinals where the flush valve is built into the wall. This panel allows easy access to service the flush valve by maintenance personnel. Additionally the panel provides protection to the flush valve from vandalism.

**Wall Panel** is heavy gage, type 304, stainless steel with exterior surface polished to a satin finish. It is provided with a 1-3/4" diameter hole for the flush valve pushbutton. Panel is secured to the frame with four 1/4"- 20 x 1-1/4" tamper resistant, stainless steel screws.

**Frame** is 16 gage jetcoat steel with a prime coat. Frame is provided with mounting holes for fastening within the furred spaces.

**S009** - Urinal (12"x12")  
**S010** - Water Closet (17"x13")

## VALVE BOX ACCESS DOORS

**Valve Box** are engineered to provide access to all types of valves and controls which are concealed in the wall. Elmdor Valve Boxes are fully enclosed and features rounded safety corners.

**Door and Frame** shall be 16 gage galvanized steel with a prime coat finish.

**Frame** is a one piece construction 1" wide and produces perfect concealment of the rough wall openings. Wall frame is provided with 1/4" mounting holes for fastening within the furred spaces allowing faster installation and giving maximum clearance.

**Hinge** is a concealed continuous piano hinge.

**Latch** is screwdriver operated.

**Finish** is a prime coat suitable for painting.

**Optional Latches:**

- CL- Cylinder Lock
- AKL- Allen Key Latch

**Optional Finish:**

- SS- Stainless Steel





## WEATHER STRIP REMOVABLE ACCESS DOORS

**Removable Access Doors** are designed with flush gaskets between the panel and frame to ensure flush air seal in all types of walls and ceilings.

**Door and Frame** shall be 16 gage galvanized steel with a prime coat finish.

**Frame** is a one piece construction 1" wide and produces perfect concealment of the rough wall openings. Wall frame is provided with 1/4" mounting holes for fastening within the furred spaces allowing faster installation and giving maximum clearance.

**Door** is fully removable and held in place by multiple latches.

**Latch** is screwdriver operated.

**Finish** is a prime coat suitable for painting.

**Optional Latch:**

- AKL- Allen Key Latch

**Optional Finish:**

- SS- Stainless Steel



## ROOF ACCESS HATCH

**Roof Access Hatches** are designed to provide convenient, cost saving access to the roofs of buildings, allowing for ladders and stair access to the roof from the interior of the building. Elmdor Roof Access Hatches are designed and engineered for durability and safety, with ease of installation. The Roof Access Hatch installs easily over the roof opening and is secured from the base flange to the roof. Curb construction shall be 14 gage (G90) galvanized steel with durable recoatable gray primer finish. It shall be 12" in height with a 3-1/2" wide mounting flange with mounting holes for roof attachment.

**Cover** is 14 gage (G90) galvanized steel with radius corners for safety and shall be fully welded at the corners for watertight construction.

**Latching** includes interior handle, exterior handle and provisions for a padlock, both inside and out.

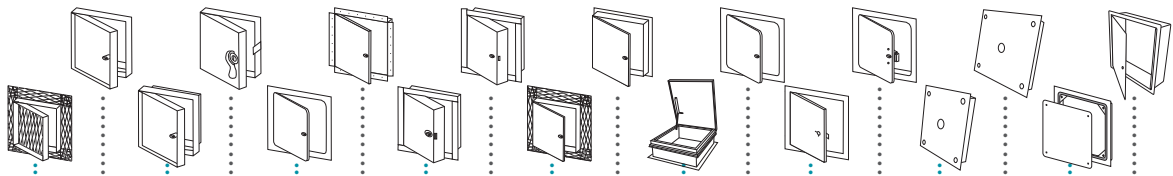
**Hardware** shall include an automatic, hold-open arm with vinyl grip and compression springs encased in telescopic tubes for smooth door operation.

### Standard Sizes (Special sizes available upon request)

SIZE	FRAME ID	FRAME OD	ROOF OPENING	SHIPPING WT lbs/kg.
24 x 24	24 x 24	31 x 31	24 x 24	115 / 52.1 kg
24 x 30	24 x 30	31 x 37	24 x 30	125 / 56.7 kg
24 x 36	24 x 36	31 x 43	24 x 36	135 / 61.2 kg
30 x 36	30 x 36	37 x 43	30 x 36	155 / 70.3 kg
30 x 54	30 x 54	37 x 61	30 x 54	225 / 102 kg
30 x 96	30 x 96	37 x 103	30 x 96	335 / 152 kg
36 x 36	36 x 36	43 x 43	36 x 36	200 / 90.7 kg
48 x 48	48 x 48	55 x 55	48 x 48	430 / 195 kg

# DOOR SERIES AND SIZES

(Special Sizes Available)



WIDTH X HEIGHT	AP	AT	CFR	DT	DW	DWB	FR	FRC	ML	PW	RAH	SF	SLA	SLK	S009	S010	WSR	VB
6" X 6"				•	•													
8" X 8"		•		•	•	•	•	•	•	•		•		•			•	•
8" X 12"					•				•	•								
10" X 10"				•	•	•	•	•	•	•		•		•			•	
12" X 12"	•	•	•	•	•	•	•	•	•	•		•	•	•	•		•	•
12" X 16"					•				•	•								
12" X 18"					•		•		•	•								
12" X 24"	•	•			•		•		•	•								
13" X 17"																•		
14" X 14"				•	•	•	•	•	•	•		•		•			•	•
14" X 20"					•													
14" X 24"					•													
15" X 15"					•													
16" X 16"		•		•	•	•	•	•	•	•		•	•	•			•	•
16" X 20"					•				•	•								
16" X 24"					•													
18" X 18"	•	•	•	•	•	•	•	•	•	•		•	•	•			•	
18" X 24"					•				•					•				
18" X 36"					•													
20" X 20"				•	•		•	•										
20" X 24"					•				•	•								
20" X 30"					•				•	•								
22" X 22"					•	•	•					•		•				
22" X 30"					•		•	•										
24" X 24"	•	•	•	•	•	•	•	•	•	•	•	•	•	•			•	
24" X 30"					•				•	•	•			•				
24" X 36"	•	•			•		•	•	•	•	•		•	•				
24" X 48"					•		•						•					
30" X 22"			•															
30" X 30"					•		•		•	•	•			•				
30" X 36"											•							
30" X 54"											•							
30" X 96"											•							
32" X 32"					•		•											
36" X 36"					•		•		•	•	•		•	•				
36" X 48"					•		•				•		•					
48" X 48"											•							

ELMDOR QUICK REFERENCE CHART

Elmdor/Stoneman Manufacturing

# GUIDELINE SPECIFICATIONS

## AP SERIES

Provide Elmdor® AP Series, Acoustical Plaster Access Doors (specify model number and options). Access door and frame shall be fabricated from 16 gage, galvanized steel with a prime coat finish suitable for painting. The door shall be recessed 5/8" and be lined with metal lath. The frame shall have a 3" wide metal lath on all four sides. Hinge shall be concealed type. Latch shall be screwdriver operated.

## AT SERIES

Provide Elmdor® AT Series, Acoustical Tile Access Door (specify model number and options). Access door shall be fabricated from 16 gage and frame from 12 gage, galvanized steel with a prime coat finish. Door shall be recessed 5/8" to accept acoustical tile or gypsum board. Hinge shall be concealed type. Latch shall be screwdriver operated.

## CFR SERIES

Provide Elmdor® CFR Series, ceiling fire resistant access doors (specify model number and options). Access door frame shall be fabricated from 16 gage steel. Access door panel shall be fabricated from 18 gage steel. Door shall be recessed 1-1/2" to accept ceiling tile. Hinge shall be continuous piano type. Latch shall be screwdriver operated.

## DT SERIES

Provide Elmdor® DT Series, Duct Access Doors (specify model number and options). Access door and frame shall be fabricated from 24 gage, galvanized steel. The door shall be 1" thick, double wall construction and insulated. Frame shall have knock-over edges for attaching to duct. Hinge shall be a continuous piano type. Cam latch shall be self-tightening and hand operated.

## DW SERIES

Provide Elmdor® DW Series, Dry Wall Access Doors (Specify model number and options.) Access door and frame shall be fabricated from 16 gage, galvanized steel with a prime coat finish suitable for painting. The door shall have rounded safety corners and a concealed piano hinge. Frame shall be one piece construction with no mitres or welds on the face. Latch shall be screwdriver operated.

## DWB SERIES

Provide Elmdor® DWB Series, Dry Wall Bead Access Doors (specify model number and options). Access door and frame shall be fabricated from 16 gage, galvanized steel with a prime coat finish suitable for painting. Frame shall have mounting holes positioned to allow anchoring directly to the studs, assuring a secure mounting. Hinge shall be concealed pivoting rod type. Latch shall be screwdriver operated.

## FR SERIES

Provide Elmdor® FR Series, Fire Rated Access Doors (specify model number and options). Access door and frame shall be fabricated from 16 gage, galvanized steel with a prime coat finish suitable for painting. Hinge shall be concealed type. Door shall have a heavy duty spring to provide positive latching when closed, and an interior latch release slide enabling door to be opened from the inside. Exterior latch shall be recessed and operated using ring attached to the sliding bolt.

## FRC SERIES

Provide Elmdor® FRC Series, Fire Rated Ceiling Access Doors (specify model number and options). Access door frame shall be fabricated from 16 gage bonderized steel with a prime coat finish and provided with masonry anchors and bolt holes. Access door panel shall be fabricated from 20 gage, bonderized steel with a prime coat finish. Door shall be filled with 2" thick, fire rated insulation, and be welded pan type. Access door shall have spring automatic closer, be self-latching and contain interior latch release. Exterior latching shall be recessed and universal self-latching bolt, operated by either a knurled knob or flush key. Finish shall be a prime coat suitable for painting. Underwriters Laboratories classification shall be: Classified access frame and fire door assembly 1-1/2 hours, "B" Label. Meets ANSI-UL 10B standard.

## ML SERIES

Provide Elmdor® ML Series, Metal Lath Access Doors (specify model number and options). Access door and frame shall be fabricated from 16 gage, galvanized steel with a prime coat finish suitable for painting. Door shall have a concealed hinge. Latch shall be screwdriver operated.

## PW SERIES

Provide Elmdor® PW Series, Plastered Wall Access Doors (specify model number and options). Access door and frame shall be fabricated from 16 gage, galvanized steel with a prime coat finish suitable for painting. The door shall have a concealed pivoting rod hinge and a screwdriver operated latch.

## ROOF ACCESS HATCH

Provide Elmdor® RAH series, Roof Access Hatch (specify model number and options). Roof hatch shall be fabricated from 14 gage (G90) galvanized steel on both curb and cover. Compression springs encased in zinc-plated telescopic tubes shall be provided for smooth operation of the cover. An automatic hold-open arm with vinyl grip will be furnished. Latching shall include both interior and exterior handles with provisions for a padlock both inside and out.

## SF SERIES

Provide Elmdor® SF Series, Surf Access Doors (specify model number and options). Access Door and Frame shall be fabricated from 14 gage, galvanized steel with a prime coat finish. Door shall have a continuous piano hinge and rounded safety corners. Latch shall be screwdriver operated.

## SLA SERIES

Provide Elmdor® SLA Series, Slammer Access Doors (specify model number and options). Access Door shall be fabricated from 10 gage steel, and frame from 3/16" x 2" x 2" angle steel, welded and with pre-punched mounting holes. Door shall have a vandal resistant lock and heavy duty hinges welded to the door and frame. Finish shall be a prime coat suitable for painting.

## SHUR-LOK SERIES

Provide Elmdor® SLK Series, Shur-Lok Access Doors (specify model number and options). Access door and Frame shall be fabricated from 14 gage, galvanized steel with a prime coat finish suitable for painting. Door shall have a 14 gage vertical reinforcement channel, a concealed hinge, and an automatic locking, springbolt lock.

## VB SERIES

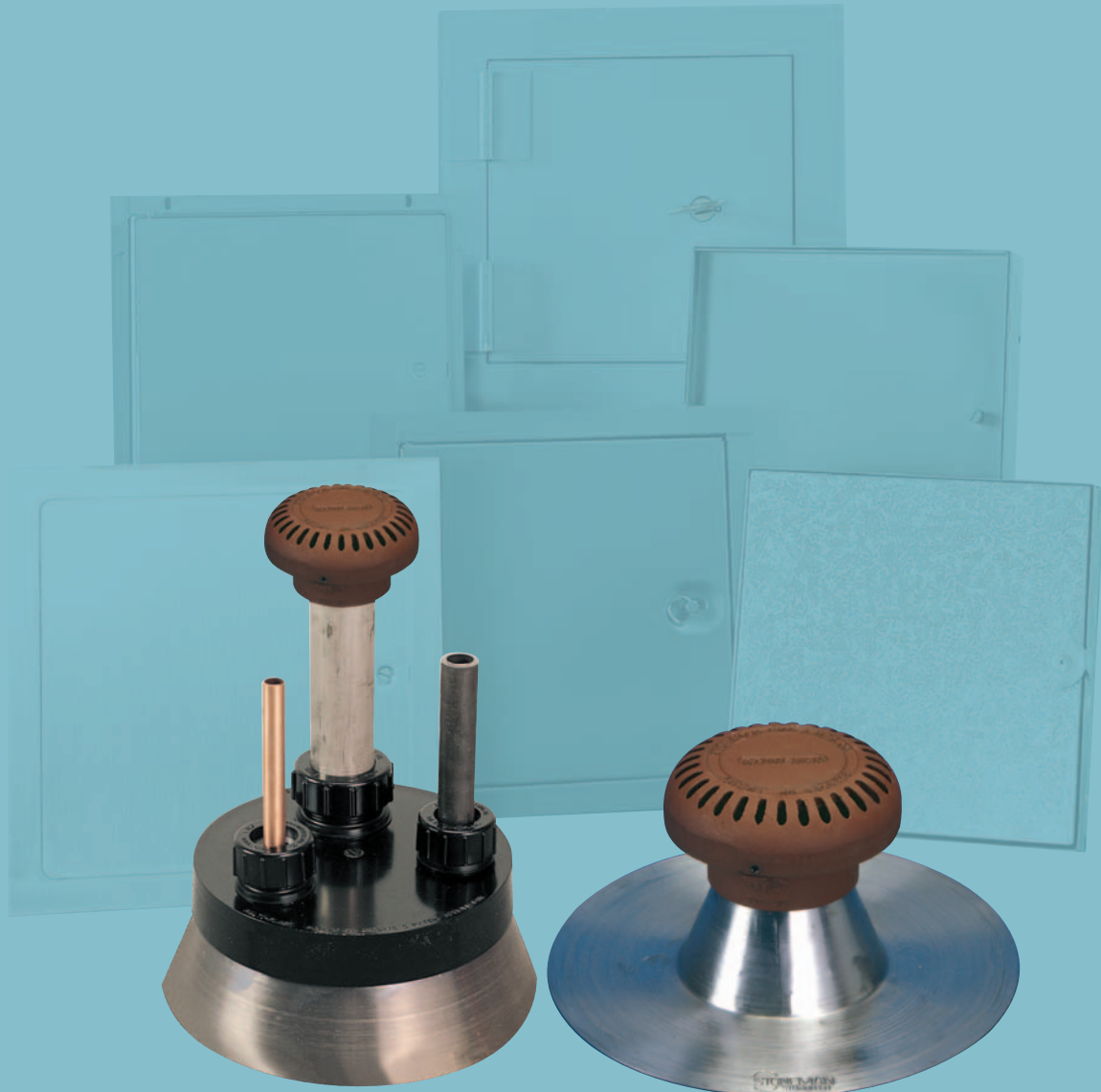
Provide Elmdor® VB series, Valve Box (specify model number and options). Access door and frame shall be fabricated from 16 gage, galvanized steel with a prime coat finish suitable for painting. The door shall have rounded safety corners and a concealed continuous piano hinge. Frame shall be one piece construction with no mitres or welds on the face. Latch shall be screwdriver operated. Box shall be fully enclosed with 16 gage, galvanized steel with a prime coat finish suitable for painting.

## WSR SERIES

Provide Elmdor® WSR series, Weather Strip Removable access door (specify model number and options). Access door and frame shall be gasketed between the panel and frame to ensure flush air seal in all types of walls and ceilings. Access door and frame shall be fabricated from 16 gage, galvanized steel with a prime coat finish suitable for painting. The door shall have rounded safety corners. Frame shall be one piece construction with no mitres or welds on the face. Latch shall be screwdriver operated.



# ROOF FLASHINGS



910 FUTURE FLASH WITH  
915 MULTI-FLASH ADAPTERS  
AND 1550 CAST IRON COUNTER FLASHING

1100-5 FLASHING WITH CAST IRON  
COUNTER FLASHING

Elmdor/Stoneman manufactures both high quality stainless steel access doors and seamless lead roof flashings. With a nationwide distribution network, Elmdor/Stoneman is dedicated to delivering quality products at a competitive price to the building and construction industry.

NOTE: FIXTURES MAY SHOW SOME AVAILABLE OPTIONS.

**ELMDOR  
STONEMAN**  
A DIVISION OF ACORN ENGINEERING COMPANY